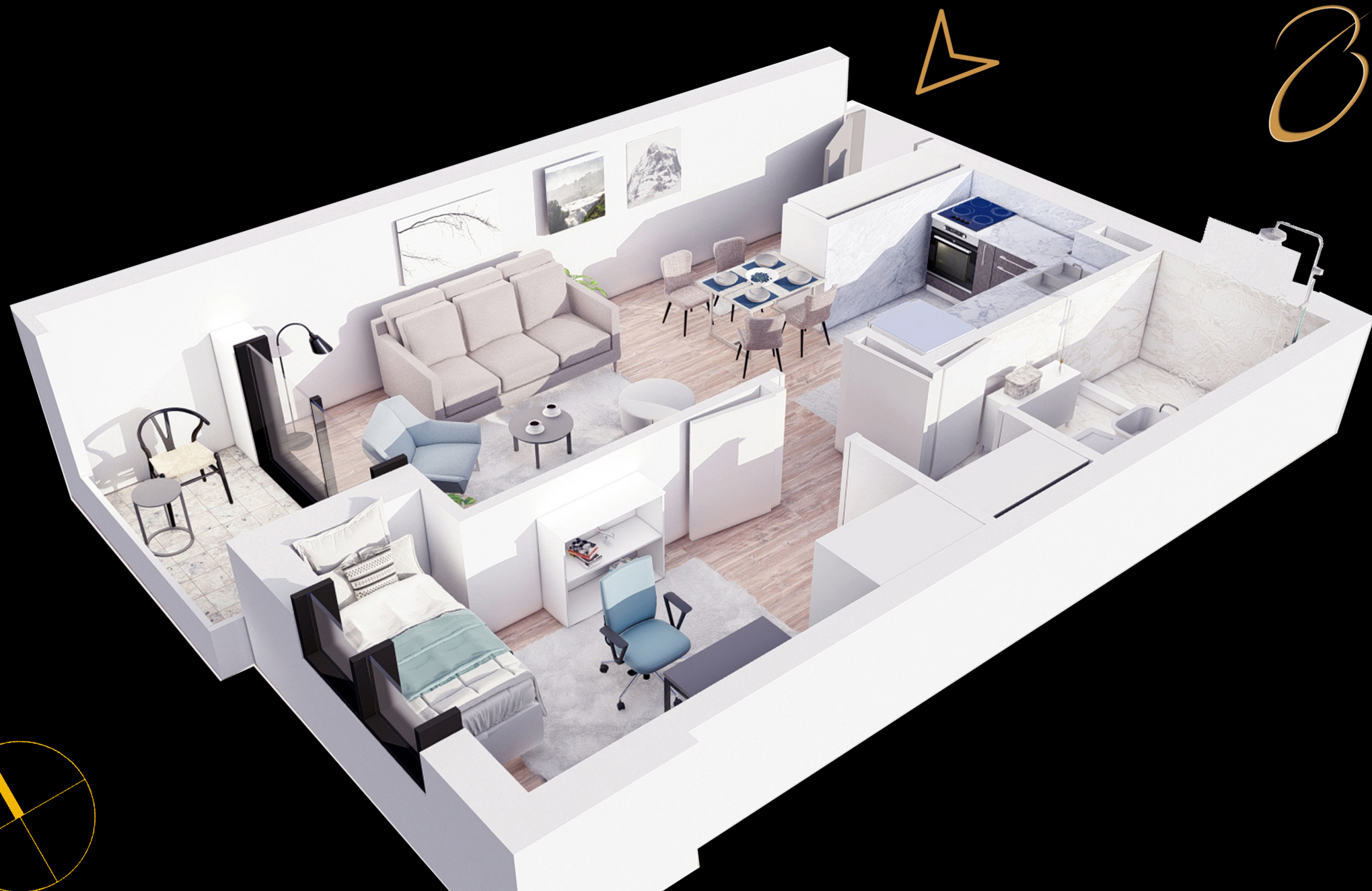
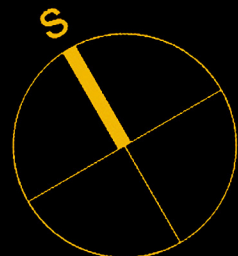
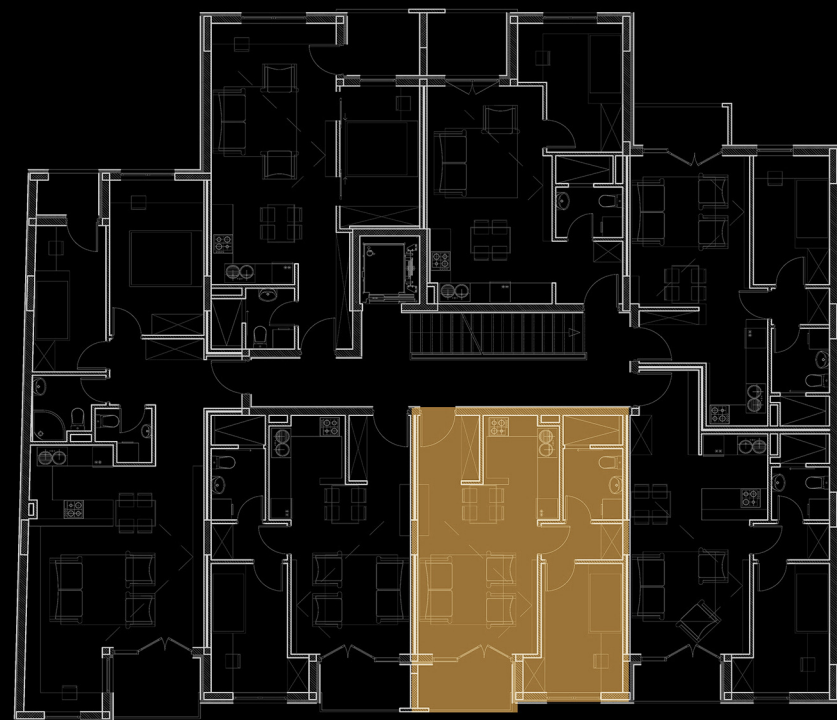


AVENUE 100



| | STAN 18 STAN 11 STAN 4 / jednoiposoban | P(m ²) |
|---|--|--------------------|
| 1 | Hodnik | 3,2 |
| 2 | Kuhinja | 5,01 |
| 3 | Dnevna soba | 16 |
| 4 | Predprostor | 2,35 |
| 5 | Kupatilo | 4,84 |
| 6 | Soba | 8,83 |
| 7 | Lođa | 3,67 |

UKUPNA POVRŠINA **42,58m²**