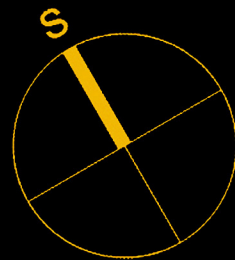
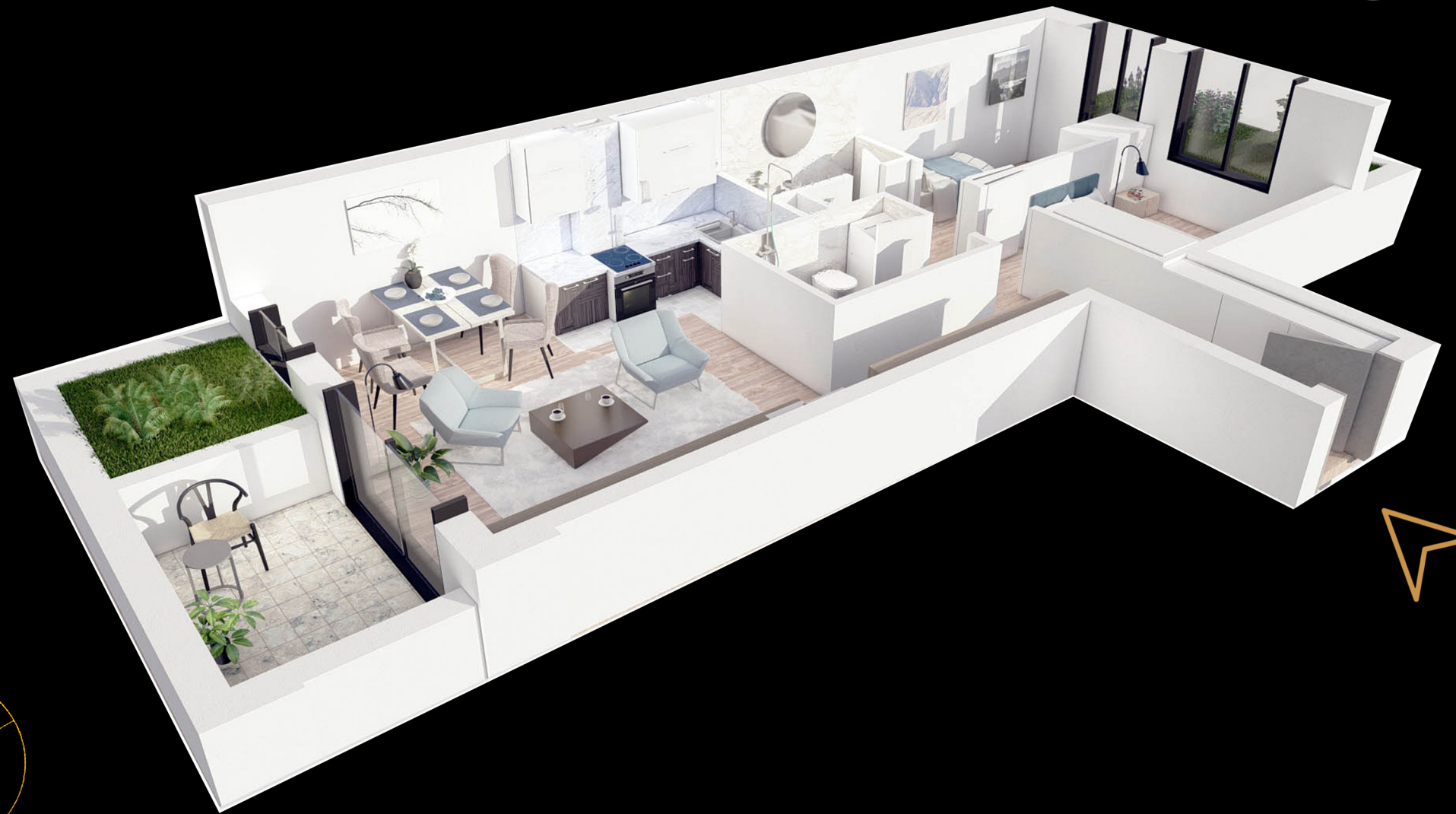


# AVENUE 100

B



## POVUČEN SPRAT STAN 25 / dvoiposoban

		P(m <sup>2</sup> )
1	Hodnik	7,76
2	Dnevna Soba	23,11
3	Kuhinja	3,32
4	Wc	2,1
5	Kupatilo	3,56
6	Soba	8,71
7	Soba	7,06
8	Lođa	4,56

UKUPNA POVRŠINA **58,37m<sup>2</sup>**